

CATALOGUE 2014/2015

WWW.NIMCOMADE4YOU.COM



PASSIONATE ABOUT YOUR FEET



WWW.NIMCOMADE4YOU.COM



PASSIONATE ABOUT YOUR FEET

SPECIAL THANKS TO:

Restaurant "A Margem" Vila Nova de Gaia: [amargem.restaurante@facebook.com](https://www.facebook.com/amargem.restaurante)

Parque Biológico de Gaia, Vila Nova de Gaia: <http://www.parquebiologico.pt/>

Caffe "Moustache" Oporto: <http://www.moustache.pt/>

Douro Marina, Vila Nova de Gaia: <http://www.douromarina.com/en/>

Feel Douro, Vila Nova de Gaia: <http://www.feeldouro.com/en/>



Moustache
Coffee House



DOURO MARINA



FEEL DOURO
YACHT CHARTER



Great shoes for everyone

Nimco Made4You manufactures and markets shoes and other orthopaedic solutions so that care for the foot's health, comfort, and perfect fitting are a means of improving its client's mobility and therefore its life quality. Our values are a commitment between the company, its employees and its clients.

Visit our virtual shop

We kindly ask you to visit our website www.nimcomade4you.com – here you will find our most detailed product – information, download essential technical information and you can order our brochures.

Furthermore, you can use our online ordering-system “Nimco Custom Made”. With our Nimco Custom Made ordering program, you will have more options in colours and materials, more adjustments and also ordering will be easier and quicker! Ask for this interactive program at: www.nimcomade4you.com.

Fast delivery

Delivery in 12 working days.







CHILDREN

New shoes in 3 steps

This catalogue can be used for orthopaedic footwear as well.

1

Choose your favourite model and colour

Make your own choice and select your model out of the brochure. All models have the option to choose from several nice colours. Also, with many models you have the option to choose between laces or velcro fastening.

Model and colour

Sizes

All shoes are available in sizes 18 to 45.

Lace/Velcro

All shoes are available with lace or velcro closure.

Back Height

High models are available in standard height or appr.3 cm lower (at size 32).

Making

All shoes are available in stitch down or cemented.

Stitch down



Cemented



2

Choose the right fitting

Now you have selected your model and colour, you have to decide what kind of last and width you want your shoes to be made on and also what kind of stiffeners are required. These components determine the correct fitting of your shoes.

Last: All shoes are available in last types TN2S, TN4S, TN6S, TN7S, TN8S, TN8XLS and AV.

Please notice! All prices are based on models with lace closure! For models shown in this brochure with velcro closure an additional surcharge will be applicable.

Fitting and adaptations

Normal stiffeners

The normal stiffeners are mostly used with our depth lasts TN2S/4S/6S. Shoes with normal stiffeners are mostly used to carry individual insoles and foot supports.



Solid (stabil) heel cap

This solid and butterfly-shaped heelcap in conjunction with the high upper of the shoe offer optimum support for the hind foot.

Orthosis heel cap

This sturdy heel cap is mostly used in combination with our special orthosis lasts TN7S/8S. These special lasts offer sufficient volume for the orthosis to fit into the shoes.



Anti-Varus heel and toe caps

Full length strengthening of the cap in the medial correction area. The overlapping rear and front cap ensure that the corrective effect is not lost.

3

Choose your favourite outsole

Light soles or extra solid and tough? Choose your own shape, colour and style! All models are available with different outsoles in several colours. For special adjustments we can supply the soles separate with the shoes.

Each shoe can be ordered as stitch down or cemented shoe. All shoes can be ordered with the different outsole types: PU Street, Rubber, Boys Sole and Girls sole.



Custom Made Shoes:

Please Notice: All prices are based on models with lace closure!

For models shown in this catalog with velcro closure an additional surcharge will be applicable.

Delivery time of 12 working days.

Nimco Custom Made Shoes have no right of return.

Rubber Bumper | Gummi Stoßkappe Rubber Bumper | Borracha Anti-choque

Not available in flexible construction

1T - Zwart | Schwarz | Black | Preto



2U - Wit | Weiss | White | Branco



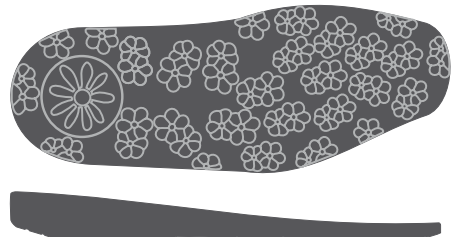
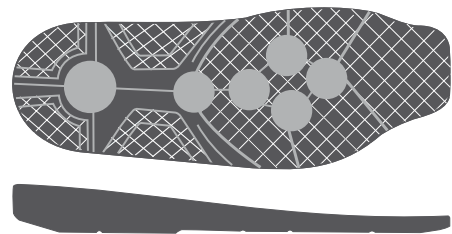
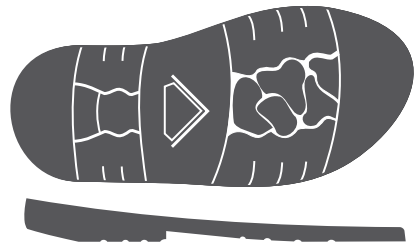
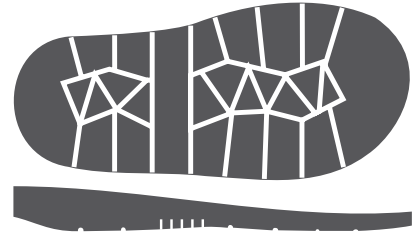
3V - Bruin | Braun | Brown | Castanho



4W - Beige | Beige | Beige | Beige



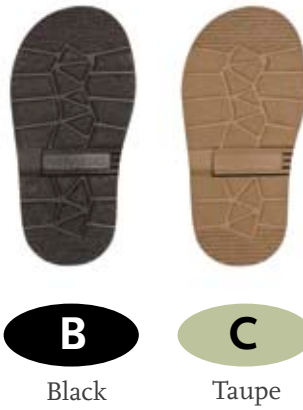
5X - Rose | Rose | Rose | Rosa



SOLE

PU Street

Flexible and thin PU sole with a good profile.



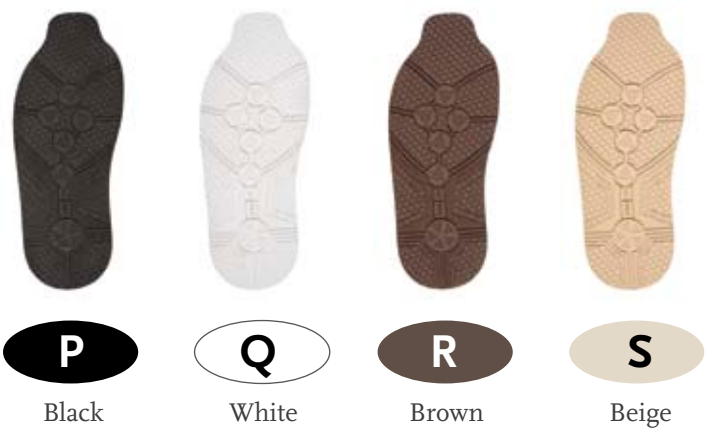
Rubber

Long lasting and strong rubber outsole.



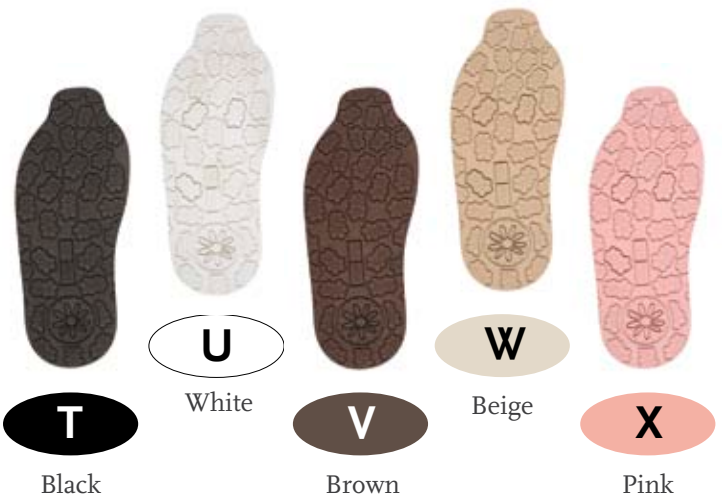
Boys Sole

Modern design, several colours and shank made of EVA, outsole made of TR-rubber with a very nice and strong profile.



Girls Sole

Fashionable design, several colours and shank made of EVA, outsole made of TR-rubber with a very nice and strong profile.



AREAL

Zip closure on medial side of shoes!

Article: 531631

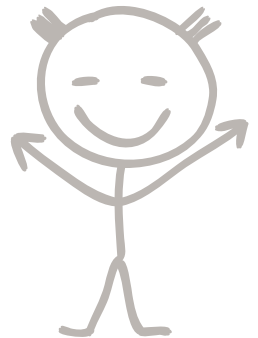
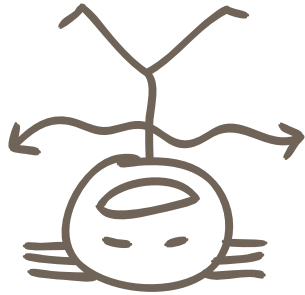
695 Kahki Denim

BENNY

Article: 531604

552 Black Wax Leather

T
R
E
X
Y
N



834 Pink Fantasy Nubuck

503 Dark Blue Leather



552/1 Black Wax Leather



699 Red Denim



693 Blue Denim



560 Brown Wax Leather

BLING BLING

Article: 531609

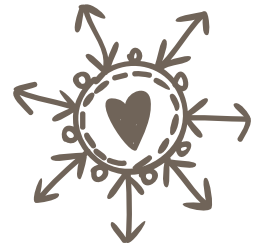
576 Blue Wax Leather



COOL

Article: 531610

220 Blue Leather



501 White Leather

607 Red Patent



849 Pink Leather



602 Black Patent



609 Blue Patent



304 Brown Nubuck

FANTASY

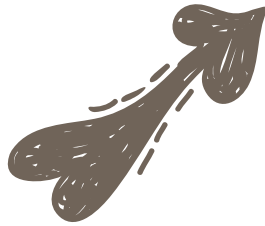
Article: 320106

325 Pink Nubuck

GOLIATH

Article: 320107

577 Fuchsia Wax Leather



576/1 Blue Wax Leather

218 Walnut Leather



610 Grey Patent



501/1 White Leather



310 Violet Nubuck



303 Navy Nubuck

MAMA

SURF

Article: 320105

567 Dark Grey Leather



STELLA

Article: 320113

963 Beige Kilt Patent



961 Black Patent Fantasy

964 Black Kilt Patent



576/2 Blue Wax Leather



966 Fuchsia Kilt Patent



555 Light Brown Wax Leather



965 Blue Kilt Patent

INDIANA

Article: 531613

578/1 Ocher Wax Leather

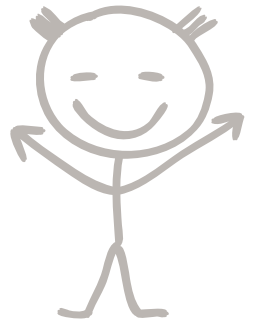


O X X
O O O
X X

JASMIM

Article: 531603

580/4 Grey Wax Leather



310/1 Violet Nubuck



607/1 Red Patent

L M
N O P
Q R S



302 Black Nubuck



602/1 Black Patent



577/2 Fuchsia Wax Leather



577/1 Fuchsia Wax Leather

SNOOPY

Article: 531636

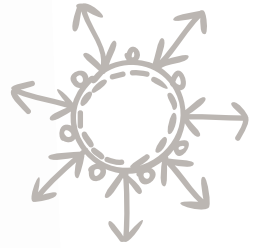
951 Fantasy Pink Nubuck

TOPGUN

Article: 531619

555/1 Light Brown Wax Leather

*It is not possible to choose other types of soles for this item
** Available in this construction only *** Sizes start at 22



960 Red Fantasy Patent



502/1 Black Leather

$$a^2 + b^2 = c^2$$



838 White Fantasy Leather



580/7 Grey Wax Leather



961/1 Black Fantasy Patent



552/1 Black Wax Leather

BAMBI

Article: 531637

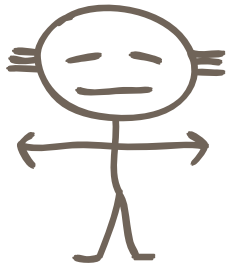
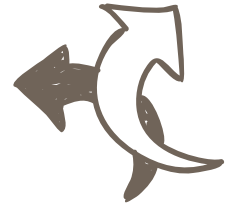
201 White Leather

POPEY

Article: 531641

580/6 Grey Wax Leather

*It is not possible to choose other types of soles for this item
** Available in this construction only *** Sizes start at 22



825 Green Fantasy Army

579/1 Beige Wax Leather



502/3 Black Leather



202 Black Leather



502/2 Black Leather



823/1 Grey Fantasy Army

SPIKE

Article: 531642

564 Brown Wax Leather



A B C D E
F G H I T

1
2

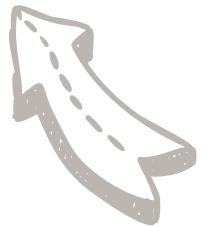
TIM

Article: 531618

579 Beige Wax Leather



3 4
5 6 7 8



579/2 Beige Wax Leather

578 Ocher Wax Leather



552/2 Black Wax Leather



580 Grey Wax Leather



578/2 Ocher Wax Leather



502 Black Leather



SHINNY

Article: 531645

580/3 Grey Wax Leather

FLORA

Article: 531648

609/1 Blue Patent

*It is not possible to choose other types of soles for this item
** Available in this construction only *** Sizes start at 22



576/4 Blue Wax Leather



607/3 Red Patent



602/2 Black Patent



501/2 White Leather



606/1 Fuchsia Patent



502/5 Black Leather



611/1 White Patent



CELIA

Specially for
Ankle-Foot
Orthosos (AFO)

Article: **420107**

610/1 Grey Patent



611 White Patent



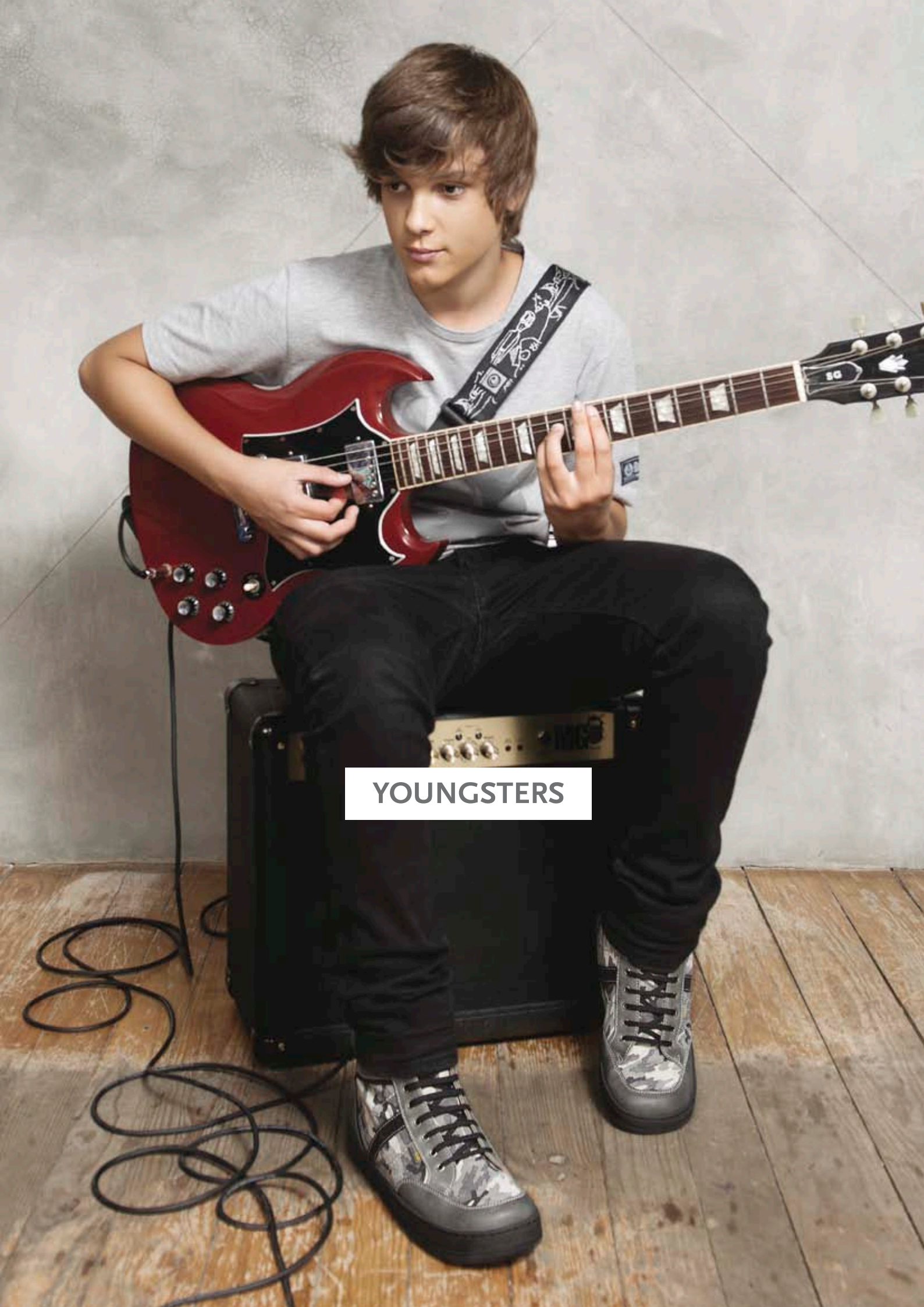
606 Fuchsia Patent



609/2 Blue Patent







YOUNGSTERS

TIN TIN

Article: **420102**

576/3 Blue Wax Leather



567/1 Dark Grey Leather



577/3 Fuchsia Wax Leather



501/3 White Leather

SUNNY

Zip closure on medial side of shoes!

Article: **531646**

580 /1 Grey Wax leather



552/5 Black Wax Leather



556/1 Brown Wax Leather



580/8 Grey Wax Leather

*It is not possible to choose other types of soles for this item
** Available in this construction only *** Sizes start at 22

COOL

Article: **531610**

607/2 Red Patent



580/2 Grey Wax Leather



602/3 Black Patent



578 Ocher Wax Leather

AREAL

Article: **531631**

552/6 Black Wax Leather



560/1 Brown Wax Leather



327 Red Nubuck



580/1 Grey Wax Leather

BAMBI

Article: **531637**

321 Brown Nubuck

*It is not possible to choose other types of soles for this item
** Available in this construction only *** Sizes start at 22



302/1 Black Nubuck



823/1 Grey Fantasy Army



825 Green Fantasy Army

FLORA

Article: **531648**

609/1 Blue Patent

*It is not possible to choose other types of soles for this item
** Available in this construction only *** Sizes start at 22



610/2 Grey Patent



607/3 Red Patent



611/1 White Patent



602/2 Black Patent

LOLITA

Article: **320114**

301 White Nubuck



PACO

Article: **320115**

825/2 Green Fantasy Army



310/2 Violet Nubuck



552/4 Black Wax Leather



552/3 Black Wax Leather



824 Brown Fantasy Army



580/5 Grey Wax Leather



563 Blue Grain Leather

NIMCQ
tex



WATER RESISTANT

WATER RESISTANT

Styles that we developed thinking of your client's special needs.

This mini collection is our response especially for the people that often have contact with moist, rain and snow*, as it's made with special water proof leathers*. To increase your protection ask for NimcoTex lining. This membrane is put in between the upper leather and the lining of the shoes, creating a barrier between bad environmental conditions and your feet.

Enjoy your Nimco Made4You shoes, and don't let a little rain, get in the way of your comfort!

* Our Water Resistant collection, is not waterproof, although.



FUNNY

Article: 531644

WP596/2 Grey Wax Waterproof Leather



WP592/1 Black Wax Waterproof Leather



WP594/1 Brown Wax Waterproof Leather



WP591 Ocher Wax Waterproof Leather

JESSIE

Zip closure on medial side of shoes!

Article: 531643

WP591/1 Ocher Wax Waterproof Leather



WP595 Fuchsia Wax Waterproof Leather



WP593/1 Burgundy Wax Waterproof Leather



WP596/3 Grey Wax Waterproof Leather





Boa® Closure System

THANKS TO THE BOA® CLOSURE SYSTEM,
THE SHOELACE IS RAPIDLY BECOMING A THING OF THE PAST.
IT IS A FUNDAMENTAL SHIFT IN FUNCTION AND PERFORMANCE
THAT HAS USHERED IN A NEW ERA OF HUMAN MOVEMENT.



BOA Closing

Our proprietary closure system of steel lace, nylon guides and a mechanical reel was designed to address the long list of deficiencies found in traditional closures.

In the process, we improved upon the performance of every other closure system on the market—from Advantages.

Glove-like Fit

The Boa Closure System provides custom comfort with smooth, even closure and no pressure points.

On-the-Fly

Get easy, one-handed adjustment with a quick turn of the Boa dial.

Powerful Closure

Once locked into place, Boa reels and laces stay that way.

Durable

Made from aircraft-grade stainless steel, Boa laces are stronger per gram than tank armour.

Micro-adjustability

Boa reels offer seemingly infinite degrees of fine tuning.

Lightweight

Boa closures shed water, mud, and ice, saving precious weight.



SNOOPY



COOL



BAMBI



POPEY



INDIANA



ADULTS

Want healthy shoes that fit beautifully and feel wonderful? With our Nimco Custom Made system we'll design and make a personalised pair of Nimco speciality shoes to your exact specifications. You choose, we'll create your shoes!

Great shoes for everyone

This is our goal with our Nimco Custom Made system. Our specialty shoes will be individually produced so that you can decide exactly how you want your shoes to be designed, composed and custom fitted to you. The models which you will find in this brochure can be ordered as shown and through our online ordering system, you will find many more options and material combinations! Visit www.nimcomade4you.com and try our online ordering-system!

Size ranges

All our ladies styles are available in sizes UK 2-12 . Our gents styles are available in UK sizes 5-17 Note: our gentlemen styles in sizes > 12,5 will be supplied with a different kind of sole-unit.

Joint width

All of our shoes are available in 4 different kind of standard widths: I. K. M and O : for ladies as well as for gentlemen. We have chosen the best option in joint with. This means that every width comes with its own joint width, The result is a difference in joint width of 1.5 cm between the narrowest width (I) and the widest width (O) within one and the same size. Apart from this, you have the option to choose several applications which create extra widths.

Last

The last system consists of four widths and three different last types. Standard last: last with normal last form. Nature last: the measurements of this last are similar to the standard last, but follow the shape of the foot in a natural way.

Broken last: the last has a smaller back part than the standard last.

Size charts: the wheel

To decide about the right size and width for your client, you can use a footscan or blueprint. Next you measure the following items: length, joint width, joint circumference, cone and instep.

With this information and the wheel we developed you can easily come to the right size and width.

The wheel gives a clear overview in two sizes and the four available widths.



Further options

Our 4 standard widths can be adapted individually to get the optimum fitting and comfort for your client. You can obtain additional volume to create a medial bunion pocket (hallux valgus), additional toe box depth, additional forepart depth or additional through depth.

Adaptations on bottoms

We can offer you various adjustments/changes on the sole-units of our footwear:

- We can supply the sole-units separate with the shoes
- We can make a carbon sole-reinforcement into the sole-unit
- The online ordering system also offers the possibility to give extra roll off on sole-unit.

This rocker is placed as follows:

Early rocker = 2 cm behind joint

Normal rocker = 1 cm behind joint

Late rocker = 2 cm before joint

Stretch Leather material or normal leather?

By using our online ordering – system, you not only have more options in colours and combinations but you also have the option to choose in Xsensible stretch – leather or normal leather. The lining of the shoes always can be ordered individually – you can choose for normal calfs-leather lining or our special Diab textile lining or fur-lining for your winter-shoes.

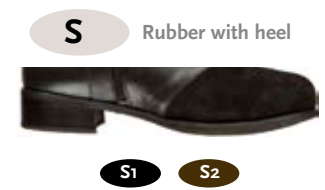
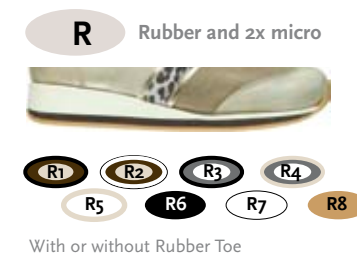
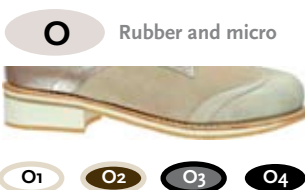
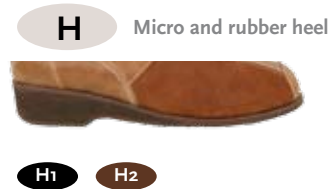
New feature - Choose your sole!

Our custom made shoes are designed to meet your preferences in every way. The type of sole and heel defines a shoe, the design of the shoes you wear defines your look and ultimately your personal style. Now you can also choose your sole and make your shoe even more unique and personal!

Man sole



Woman sole



All of this is available in 12 working days! (EU Deliveries)

This catalogue can be used for orthopaedic footwear as well.

NIMCO MADE4YOU BOOTS, HIGH IN COMFORT!

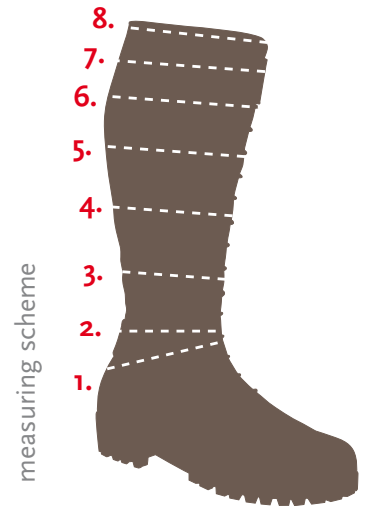
Want healthy shoes that fit beautifully and feel wonderfully?
Well Nimco has taken another step ahead in fulfilling your wishes.
No more difficulty in fitting high boots, Nimco, has now elegant,
high quality and completely Made4You high boots, made to fit the dif-
ferences in every ladie's leg sizes. And they are beautiful too!

Size chart for models Sara and Isabel

Size	2	2 1/2	3	3 1/2	4	4 1/2	5	5 1/2	6	6 1/2	7	7 1/2	8	8 1/2	9	9 1/2	10	10 1/2	11	11 1/2	12
o. TOTAL UPPER HEIGHT IN CM																					
S	34,8	35,3	35,7	36,2	36,7	37,1	37,6	38,0	38,5	38,9	39,4	39,9	40,3	40,8	41,3	41,7	42,2	42,7	43,1	43,6	44,1
M	34,8	35,3	35,7	36,2	36,7	37,1	37,6	38,0	38,5	38,9	39,4	39,9	40,3	40,8	41,3	41,7	42,2	42,7	43,1	43,6	44,1
L	34,8	35,3	35,7	36,2	36,7	37,1	37,6	38,0	38,5	38,9	39,4	39,9	40,3	40,8	41,3	41,7	42,2	42,7	43,1	43,6	44,1
1. ANKLE CIRCUMFERENCE																					
S	241,2	245,6	250,0	254,4	258,8	263,2	267,6	272,0	276,7	281,4	286,1	290,8	295,5	300,2	304,9	309,6	314,3	319,0	323,7	328,4	333,1
M	241,2	245,6	250,0	254,4	258,8	263,2	267,6	272,0	276,7	281,4	286,1	290,8	295,5	300,2	304,9	309,6	314,3	319,0	323,7	328,4	333,1
L	241,2	245,6	250,0	254,4	258,8	263,2	267,6	272,0	276,7	281,4	286,1	290,8	295,5	300,2	304,9	309,6	314,3	319,0	323,7	328,4	333,1
2. CIRCUMFERENCE AT 10CM																					
S	225,3	229,4	233,5	237,6	241,7	245,8	249,9	254,0	258,4	262,7	267,1	271,4	275,8	280,1	284,5	288,8	293,2	297,5	301,9	306,2	310,6
M	225,3	229,4	233,5	237,6	241,7	245,8	249,9	254,0	258,4	262,7	267,1	271,4	275,8	280,1	284,5	288,8	293,2	297,5	301,9	306,2	310,6
L	227,0	231,1	235,2	239,3	243,4	247,5	251,6	255,7	260,0	264,3	268,6	272,9	277,2	281,5	285,8	290,1	294,4	298,7	303,0	307,3	311,6
3. CIRCUMFERENCE AT 15CM																					
S	242,4	245,8	249,2	252,6	256,0	259,3	262,7	266,1	269,9	273,7	277,5	281,3	285,1	288,9	292,7	296,5	300,3	304,1	307,9	311,7	315,5
M	252,2	255,5	258,8	262,1	265,4	268,6	271,9	275,2	278,9	282,5	286,2	289,8	293,5	297,1	300,8	304,4	308,1	311,7	315,4	319,0	322,7
L	267,5	270,5	273,6	276,6	279,6	282,6	285,6	288,6	292,0	295,3	298,7	302,1	305,5	308,8	312,2	315,6	318,9	322,3	325,7	329,0	332,4
4. CIRCUMFERENCE AT 20CM																					
S	270,8	274,2	277,6	281,0	284,4	287,8	291,2	294,6	298,4	302,1	305,9	309,6	313,4	317,1	320,9	324,6	328,4	332,1	335,9	339,6	343,4
M	289,0	292,3	295,7	299,0	302,4	305,7	309,1	312,4	316,1	319,7	323,4	327,0	330,7	334,3	338,0	341,6	345,3	348,9	352,6	356,2	359,9
L	309,9	313,4	316,9	320,4	323,9	327,4	330,9	334,4	338,1	341,8	345,5	349,2	352,9	356,6	360,3	364,0	367,7	371,4	375,1	378,8	382,5
5. CIRCUMFERENCE AT 25CM																					
S	293,6	297,7	301,9	306,0	310,2	314,3	318,5	322,6	326,7	330,7	334,8	338,8	342,9	346,9	351,0	355,0	359,1	363,1	367,2	371,2	375,3
M	315,5	319,8	324,2	328,6	332,9	337,3	341,6	346,0	350,2	354,3	358,5	362,6	366,8	370,9	375,1	379,2	383,4	387,5	391,7	395,8	400,0
L	338,7	343,3	348,0	352,6	357,3	361,9	366,6	371,2	375,6	380,1	384,5	388,9	393,4	397,8	402,2	406,6	411,1	415,5	419,9	424,4	428,8
6. CIRCUMFERENCE AT 30CM																					
S	301,1	306,4	311,7	317,0	322,3	327,6	332,9	338,2	343,2	348,2	353,2	358,2	363,2	368,2	373,2	378,2	383,2	388,2	393,2	398,2	403,2
M	329,8	335,5	341,3	347,0	352,8	358,5	364,3	370,0	374,9	379,7	384,6	389,4	394,3	399,1	404,0	408,8	413,7	418,5	423,4	428,2	433,1
L	347,8	353,8	359,9	365,9	372,0	378,0	384,1	390,1	395,8	401,5	407,2	412,9	418,6	424,3	430,0	435,7	441,4	447,1	452,8	458,5	464,2
7. CIRCUMFERENCE AT 35CM																					
S	298,0	303,9	309,9	315,8	321,8	327,7	333,7	339,6	345,6	351,6	357,7	363,7	369,7	375,7	381,7	387,8	393,8	399,8	405,8	411,8	417,9
M	322,7	328,8	334,9	341,0	347,1	353,2	359,3	365,4	371,9	378,4	384,9	391,4	397,9	404,4	410,9	417,4	423,9	430,4	436,9	443,4	449,9
L	348,6	355,0	361,5	367,9	374,3	380,7	387,2	393,6	400,4	407,2	414,0	420,8	427,6	434,4	441,2	448,0	454,8	461,6	468,4	475,2	482,0
8. CIRCUMFERENCE ON TOP LINE																					
S	298,1	303,7	309,4	315,0	320,7	326,3	332,0	337,6	343,7	349,8	355,9	362,0	368,1	374,2	380,3	386,4	392,5	398,6	404,7	410,8	416,9
M	323,1	329,1	335,1	341,1	347,1	353,1	359,1	365,1	371,7	378,3	384,9	391,5	398,1	404,7	411,3	417,9	424,5	431,1	437,7	444,3	450,9
L	348,6	355,1	361,7	368,3	374,8	381,4	387,9	394,5	401,7	408,8	416,0	423,1	430,3	437,4	444,6	451,7	458,9	466,0	473,2	480,3	487,5

How to choose a size for your customer, in 3 steps:

1. First you choose the size and last on your wheel;
2. Then you check the measuring points on this scheme and measure the leg;
3. You complement by choosing from 3 different leg sizes S, M and L, seen in the chart below



Size chart for model Celeste

Size	2	2 1/2	3	3 1/2	4	4 1/2	5	5 1/2	6	6 1/2	7	7 1/2	8	8 1/2	9	9 1/2	10	10 1/2	11	11 1/2	12
o. TOTAL UPPER HEIGHT IN CM																					
S	34,8	35,3	35,7	36,2	36,7	37,1	37,6	38,0	38,5	38,9	39,4	39,9	40,3	40,8	41,3	41,7	42,2	42,7	43,1	43,6	44,1
M	34,8	35,3	35,7	36,2	36,7	37,1	37,6	38,0	38,5	38,9	39,4	39,9	40,3	40,8	41,3	41,7	42,2	42,7	43,1	43,6	44,1
L	34,8	35,3	35,7	36,2	36,7	37,1	37,6	38,0	38,5	38,9	39,4	39,9	40,3	40,8	41,3	41,7	42,2	42,7	43,1	43,6	44,1
1. ANKLE CIRCUMFERENCE																					
S	260,1	264,8	269,5	274,2	278,9	283,6	288,3	293,0	298,1	303,2	308,3	313,4	318,5	323,6	328,7	333,8	338,9	344,0	349,1	354,2	359,3
M	260,1	264,8	269,5	274,2	278,9	283,6	288,3	293,0	298,1	303,2	308,3	313,4	318,5	323,6	328,7	333,8	338,9	344,0	349,1	354,2	359,3
L	260,1	264,8	269,5	274,2	278,9	283,6	288,3	293,0	298,1	303,2	308,3	313,4	318,5	323,6	328,7	333,8	338,9	344,0	349,1	354,2	359,3
2. CIRCUMFERENCE AT 10CM																					
S	242,5	247,2	251,9	256,6	261,3	266,0	270,7	275,4	280,3	285,2	290,1	295,0	299,9	304,8	309,7	314,6	319,5	324,4	329,3	334,2	339,1
M	244,9	249,6	254,3	259,0	263,7	268,4	273,1	277,8	282,6	287,4	292,2	297,0	301,8	306,6	311,4	316,2	321,0	325,8	330,6	335,4	340,2
L	250,2	254,4	258,6	262,8	267,0	271,2	275,4	279,6	284,3	288,9	293,6	298,2	302,9	307,5	312,2	316,8	321,5	326,1	330,8	335,4	340,1
3. CIRCUMFERENCE AT 15CM																					
S	260,7	264,7	268,7	272,6	276,6	280,6	284,6	288,6	293,1	297,5	302,0	306,4	310,9	315,3	319,8	324,2	328,7	333,1	337,6	342,0	346,5
M	275,6	279,4	283,2	287,0	290,8	294,6	298,4	302,2	306,4	310,7	314,9	319,1	323,4	327,6	331,8	336,0	340,3	344,5	348,7	353,0	357,2
L	289,5	293,2	296,9	300,6	304,3	307,9	311,6	315,3	319,3	323,3	327,3	331,3	335,3	339,3	343,3	347,3	351,3	355,3	359,3	363,3	367,3
4. CIRCUMFERENCE AT 20CM																					
S	281,6	285,6	289,7	293,7	297,8	301,8	305,9	309,9	314,4	318,8	323,3	327,7	332,2	336,6	341,1	345,5	350,0	354,4	358,9	363,3	367,8
M	304,4	308,5	312,6	316,7	320,8	324,9	329,0	333,1	337,5	341,9	346,4	350,8	355,2	359,6	364,0	368,5	372,9	377,3	381,7	386,1	390,6
L	325,3	329,5	333,8	338,0	342,3	346,5	350,8	355,0	359,4	363,8	368,2	372,6	377,0	381,4	385,8	390,2	394,6	399,0	403,4	407,8	412,2
5. CIRCUMFERENCE AT 25CM																					
S	298,4	303,0	307,6	312,1	316,7	321,3	325,9	330,5	335,2	339,8	344,5	349,2	353,9	358,5	363,2	367,9	372,5	377,2	381,9	386,5	391,2
M	324,5	329,3	334,2	339,0	343,8	348,6	353,4	358,2	363,2	368,1	373,1	378,0	383,0	387,9	392,9	397,8	402,8	407,7	412,7	417,6	422,6
L	348,0	353,3	358,7	364,0	369,4	374,7	380,1	385,4	390,5	395,6	400,7	405,8	410,9	416,0	421,1	426,2	431,3	436,4	441,5	446,6	451,7
6. CIRCUMFERENCE AT 30CM																					
S	299,1	304,9	310,8	316,6	322,5	328,3	334,2	340,0	345,5	351,0	356,5	362,0	367,5	373,0	378,5	384,0	389,5	395,0	400,5	406,0	411,5
M	327,6	333,8	340,0	346,2	352,4	358,6	364,8	371,0	376,8	382,6	388,4	394,2	400,0	405,8	411,6	417,4	423,2	429,0	434,8	440,6	446,4
L	352,1	358,6	365,1	371,6	378,1	384,6	391,1	397,6	404,0	410,3	416,7	423,0	429,4	435,7	442,1	448,4	454,8	461,1	467,5	473,8	480,2
7. CIRCUMFERENCE AT 35CM																					
S	289,4	295,7	302,1	308,4	314,8	321,1	327,5	333,8	340,5	347,1	353,8	360,4	367,1	373,7	380,4	387,0	393,7	400,3	407,0	413,6	420,3
M	316,4	323,5	330,6	337,7	344,8	351,9	359,0	366,1	373,2	380,3	387,4	394,5	401,6	408,7	415,8	422,9	430,0	437,1	444,2	451,3	458,4
L	346,1	353,2	360,3	367,4	374,5	381,6	388,7	395,8	403,2	410,5	417,9	425,2	432,6	439,9	447,3	454,6	462,0	469,3	476,7	484,0	491,4
8. CIRCUMFERENCE ON TOP LINE																					
S	289,5	294,9	300,3	305,7	311,1	316,5	321,9	327,3	333,2	339,1	345,0	350,9	356,9	362,8	368,7	374,6	380,5	386,4	392,3	398,2	404,1
M	317,4	323,3	329,2	335,1	341,0	346,9	352,8	358,7	365,2	371,7	378,1	384,6	391,1	397,6	404,1	410,5	417,0	423,5	430,0	436,5	442,9
L	347,0	353,4	359,9	366,3	372,8	379,2	385,7	392,1	399,2	406,3	413,4	420,5	427,6	434,7	441,8	448,9	456,0	463,1	470,2	477,3	484,4





YOUNG WOMAN

RACHEL

Leather with stretch suede

Article: 7209

278 Off-White Grain Nubuck

GABY

Leather with stretch suede

Article: 7211

233/3 Multi Grey Leather

*It is not possible to choose other types of soles for this item
** Available in this construction only



172/1 Black
Leather

497 Multi
Cobalt Suede



277 Cobalt
Grain Nubuck

410 Multi Beige
Suede



181/1 Amber Leather

402/1 Multi Black Suede

DIONISIA

Leather with stretch suede

Article: **7017**

230/2 Multi Blue Leather



LUCIA

Leather with stretch suede/*Leather

Article: **7016**

577 Multi Pink Leather



183/5 Multi Sand Leather



610/1 Multi Grey Leather



172/9 Multi Black
Leather



614 Multi Beige Leather



183/4 Multi Sand Leather



*230/1 Multi Blue Leather

OLIVIA

Leather with stretch suede/*Leather

Article: **7204**

276 Amber Grain Nubuck

Not available with velcro closure
Laces are decorative



*846/1 Black
Leather



233 Grey Wax
Leather



279/1 Taupe
Grain Nubuck



SARA

Leather with stretch suede

Article: **7302**

104/3 Multi Brown
Leather

Not available with velcro closure



231/2 Multi
Camel Leather



102/8 Multi
Black Leather

TRUDY

Leather with stretch suede

Article: **7107**

610 Multi Grey Patent



RITA

Leather with stretch suede

Article: **7109**

183/6 Multi Sand Leather



351 Multi Cobalt
Leather



602 Black Patent



880 Fantasy Amber



351/1 Multi Cobalt
Leather



881 Fantasy Grey



184/7 Multi Taupe Leather





WOMAN

ANNABEL

Leather with stretch suede

Article: **7205**

181 Amber Leather

JILL

Leather with stretch suede / * leather

Article: **7007**

185 Warm Grey Leather

*It is not possible to choose other types of soles for this item
** Available in this construction only



182 Off-White
Leather

172/2 Black Leather



*210 White Leather

230 Blue Leather



172 Black Leather

181/2 Amber Leather

ADELE

Leather (Possibility of stretch material without perforations)

Article: **7008**

231 Amber Leather

PATTY

Leather with stretch suede

Article: **7015**

233/4 Multi Grey Leather

*It is not possible to choose other types of soles for this item
** Available in this construction only



182/1 Off-White
Leather

184/6 Multi Taupe Leather



172/3 Black Leather

183/2 Multi Sand
Leather



184 Taupe Leather

102/6 Multi Black Leather

ESMEE

Leather with stretch suede / * leather

Article: **7207**

*172/5 Black Leather

Style also available in micro soles

PEGGY

Leather with stretch suede

Article: **7208**

184/3 Taupe Leather

Style also available in micro soles



181/3 Amber
Leather

172/6 Black
Leather



226 Grey Leather

181/4 Amber
Leather



184/2 Taupe Leather



174/1 Brown Leather

EMELY

Leather with stretch suede / * leather

Article: **7010**

*174/2 Brown Leather

Style also available in micro soles

SUSY

Leather with stretch suede

Article: **7014**

184/5 Multi Taupe Leather



184/3 Taupe Leather

226/1 Multi Grey Leather



*172/7 Black Leather

183/1 Multi Sand Leather



181/4 Amber Leather

102/5 Multi Black Leather

AIDA VELCRO

Leather with stretch suede

Article: **7203**

103/1 Dark Blue Leather

INSPIRATION VELCRO

Leather with stretch suede

Article: **7103**

121/1 Grey Leather



104/1 Dark Brown
Leather

181/6 Amber
Leather



103/1 Dark Blue
Leather



115 Desert
Leather



102/1 Black Leather



102/1 Black Leather

POLISH VELCRO

Leather with stretch suede

Article: **7102**

121 Grey Leather

SHARON

Leather with stretch suede

Article: **7006**

115/1 Desert Leather



103 Dark Blue
Leather

104/2 Dark Brown
Leather



181/4 Amber
Leather

181/7 Amber
Leather



104 Dark
Brown
Leather



102/2 Black
Leather



102 Black
Leather

JADE

Leather with stretch suede

Article: **7000**

181/4 Amber Leather

VICKY

Leather with stretch suede

Article: **7012**

174 Brown Leather



184/3 Taupe Leather

227 Navy Leather



102/7 Black Leather

184/1 Taupe Leather



115/2 Desert Leather

172/4 Black Leather



846 Black Leather



857 Brown Leather

ISABEL

Leather with stretch suede

Article: 7300

231/1 Amber Leather

Not available with velcro closure



CELESTE

Leather with stretch suede

Article: 7301

184/2 Taupe Leather

Not available with lace closure



172/8 Black Leather



174/4 Brown Leather

THERESA

Leather with stretch suede / * leather

Article: 7105

184/4 Taupe Leather

CARLA

Leather with stretch suede / * leather

Article: 7104

121 Grey Leather



227/1 Navy Leather

*182/2 Off-White Leather



181/8 Amber Leather

102/4 Black Leather



*102/3 Black Leather

181/8 Amber Leather

TRUDY

Leather with stretch suede

Article: **7107**

174/3 Brown Leather

SOPHIE

Leather with stretch suede

Article: **7108**

327 Multi Red Nubuck



120 Red Leather

183/3 Multi Sand
Leather



183 Sand
Leather

233/1 Multi Grey
Leather



172/4 Black Leather

210/1 Multi White Leather





YOUNG MAN

MAX

Leather with stretch suede

Article: **7704**

823 Grey Fantasy Army



THEO

Leather with stretch suede/*Leather

Article: **7708**

561/2 Multi Grey Grain Leather



578 Ocher Wax
Leather



*201/1 Multi White
Leather



825 Green
Fantasy Army



272/1 Multi Black
Leather



272 Black
Grain Leather



*274 Multi Brown
Grain Leather

LUIGI

Leather with stretch suede/*Leather

Article: **7521**

563 Multi Cobalt Leather



JACK

Leather with stretch suede

Article: **7510**

231/3 Multi Amber Leather



272/2 Multi Black
Grain Leather



226/2 Multi Grey
Leather



*558/1 Multi Kahki
Wax Leather



102/9 Multi Black
Leather



561/3 Multi Grey
Grain Leather



230/5 Multi Cobalt
Leather





MAN

ANDY

Leather with stretch suede

Article: 7511

279/2 Taupe Grain Nubuck

ANTON

Leather with stretch suede

Article: 7703

561 Grey Grain Leather

*It is not possible to choose other types of soles for this item
** Available in this construction only

*It is not possible to choose other types of soles for this item
** Available in this construction only



254 Brown Grain Leather

279/3 Taupe Grain Nubuck



278/2 Off-White Grain Nubuck

502/1 Black Leather



253 Dark Blue Grain Leather

504/5 Dark Brown Leather

PHILIP

Leather with stretch suede / * leather

Article: **7513**

566 Brown Leather

JACK

Leather with stretch suede / * suede

Article: **7510**

* 402 Black Suede



*552/1 Black Wax Leather

504/2 Dark Brown Leather



555 Light Brown Wax Leather

*404 Brown Suede



*504 Dark Brown Leather

502 Black Leather

ORLANDO

Leather with stretch suede / * leather

Article: 7501

252 Black Grain Leather

SAILOR

Leather with stretch suede / * leather

Article: 7503

502/3 Black Leather



*574 Brown Leather



504/3 Dark Brown Leather



254/1 Brown Grain Leather



217 Brown Grain Leather



*502/2 Black Leather



252 Black Grain Leather

LUCA LACE

Leather with stretch suede / * lycra / ** leather

Article: **7507**

502 Black Leather

BRAVE

Leather with stretch suede

Article: **7702**

502/5 Black Leather



**504/4 Dark Brown Leather

574/2 Brown Leather



574/1 Brown Leather

254/1 Brown Grain Leather



502/4 Black Leather/lycra

252 Black Grain Leather

ROBERT

Leather with stretch suede

Article: **7520**

230/3 Multi Blue Leather

RICHARD

Leather with stretch suede

Article: **7707**

184/8 Taupe Leather



561/1 Multi Grey Grain
Leather

576 Ocher Wax
Leather



558 Multi Kahki Wax
Leather

230/4 Blue
Leather



201 Multi White Grain
Leather

552 Black Wax
Leather

KARL

Leather with stretch suede

Article: 7603

563/1 Blue Grain Leather



561/4 Grey Grain Leather



552/2 Black Wax Leather



556 Brown Wax Leather



NIMCO
tex



WATER RESISTANT

WATER RESISTANT

Styles that we developed thinking of your client's special needs.

This mini collection is our response especially for the people that often have contact with moist, rain and snow*, as it's made with special water proof leathers*. To increase your protection ask for NimcoTex lining. This membrane is put in between the upper leather and the lining of the shoes, creating a barrier between bad environmental conditions and your feet.

Enjoy your Nimco Made4You shoes, and don't let a little rain, get in the way of your comfort!

* Our Water Resistant collection, is not waterproof, although.

THIJS

Article: **7706**

WP590 Khaki Water-
proof Wax Leather



WP591 Ocher Water-
proof Leather



WP592 Black
Waterproof Wax
Leather



WP596 Grey Water-
proof Wax Leather

EDITH

Article: **7210**

WP596/1 Grey Water-
proof Wax Leather



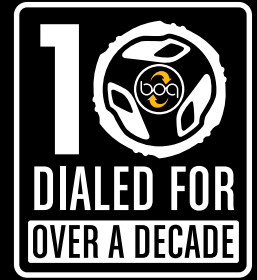
WP593 Burgundy
Waterproof Wax
Leather



WP590/1 Khaki
Waterproof Wax
Leather



WP594 Brown Waterproof Wax Leather



Boa® Closure System

THANKS TO THE BOA® CLOSURE SYSTEM,
THE SHOELACE IS RAPIDLY BECOMING A THING OF THE PAST.
IT IS A FUNDAMENTAL SHIFT IN FUNCTION AND PERFORMANCE
THAT HAS USHERED IN A NEW ERA OF HUMAN MOVEMENT.



BOA Closing

Our proprietary closure system of steel lace, nylon guides and a mechanical reel was designed to address the long list of deficiencies found in traditional closures.

In the process, we improved upon the performance of every other closure system on the market—from Advantages.

Glove-like Fit

The Boa Closure System provides custom comfort with smooth, even closure and no pressure points.

On-the-Fly

Get easy, one-handed adjustment with a quick turn of the Boa dial.

Powerful Closure

Once locked into place, Boa reels and laces stay that way.

Durable

Made from aircraft-grade stainless steel, Boa laces are stronger per gram than tank armour.

Micro-adjustability

Boa reels offer seemingly infinite degrees of fine tuning.

Lightweight

Boa closures shed water, mud, and ice, saving precious weight.



LUIGI



SHARON



INSPIRATION



POLISH



LUCA



BRAVE



AIDA



DIONISIA



STOCK COLLECTION

FAST DELIVERY

Nimco Stock Collection consists of our best selling items and deliverable from stock

KATE LACE

Leather with stretch suede

Article: **2189.2**

433 Taupe

Size: 3 - 9 (UK) Last: T180 Nature JK



KATE VELCRO

Leather with stretch suede

Article: **2280.2**

433 Taupe

Size: 3 - 9 (UK) Last: T180 Nature JK



KRISTIE LACE

Leather with stretch suede

Article: **2190.2**

811 Grey

Size: 3 - 9 (UK) Last: T180 Nature JK



KRISTIE VELCRO

Leather with stretch suede

Article: **2281.2**

811 Grey

Size: 3 - 9 (UK) Last: T180 Nature JK



VIVIAN LACE

Stretch leather

Article: **2423.3**

001 Black

Size: 3 - 9 (UK) Last: T180 Nature JK



VIVIAN VELCRO

Stretch leather

Article: **2424.3**

001 Black

Size: 3 - 9 (UK) Last: T180 Nature JK



CAROLINE VELCRO

Leather with lycra

Article: **2202.1**

002 Black

Size: 36 - 43 (EU) Last: T180/L



433 Taupe

LILLY LACE

Leather with stretch suede

Article: **2188.2**

001 Black

Size: **3 - 9 (UK)** Last: **T180 Nature JK**



LILLY VELCRO

Leather with stretch suede

Article: **2279.2**

001 Black

Size: **3 - 9 (UK)** Last: **T180 Nature JK**



JANE VELCRO

Leather with stretch suede

Article: **2422.2**

001 Black

Size: **3 - 9 (UK)** Last: **T180**



MARISKA LACE

Leather with stretch suede

Article: **2421.2**

001 Black

Size: **3 - 9 (UK)** Last: **T180**



340 Amber

MARIET LACE

Leather with stretch suede

Article: **2186.2**

001 Black

Size: **3 - 9 (UK)** Last: **T180/K**



327 Coffee

MARIET VELCRO

Leather with stretch suede

Article: **2286.2**

001 Black

Size: **3 - 9 (UK)** Last: **T180/K**



461 Sand

MAXIME LACE

Leather with stretch suede

Article: **2187.2**

001 Black

Size: **3 - 9 (UK)** Last: **T180**



811 Grey

MAXIME VELCRO

Leather with stretch suede

Article: **2278.2**

001 Black

Size: **3 - 9 (UK)** Last: **T180**



433 Taupe

TON LACE

Leather with stretch leather

Article: **1141.3**

301 Brown

Size: **6 - 12(UK)** Last: **39K Nature JK**



TON VELCRO

Leather with stretch leather

Article: **1241.3**

301 Brown

Size: **6 - 12(UK)** Last: **39K Nature JK**



CHRIS LACE

Leather with stretch suede

Article: **1143.2**

433 Taupe

Size: **6 - 12(UK)** Last: **39K Nature JK**



CHRIS VELCRO

Leather with stretch suede

Article: **1243.2**

433 Taupe

Size: **6 - 12(UK)** Last: **39K Nature JK**



CASPER LACE

Leather with stretch leather

Article: **1401.3**
001 Black

Size: **6 - 12**(UK)
Last: **39K Nature JK**



CASPER VELCRO

Leather with stretch leather

Article: **1501.3**
001 Black

Size: **6 - 12**(UK)
Last: **39K Nature JK**



DEAN LACE

Stretch suede

Article: **1142.2**
001 Black

Size: **6 - 12**(UK)
Last: **39K Nature JK**



DEAN VELCRO

Stretch suede

Article: **1242.2**
001 Black

Size: **6 - 12**(UK)
Last: **39K Nature JK**



LIVERPOOL

Leather

Article: **1981**
001 Black

Size: **5 - 13** (UK)
Last: **39K**



WALES

Leather

Article: **1996**
001 Black

Size: **5 - 13^{1/2}** (UK)
Last: **39K**



available until
end of existing stock

LEAF LACE

Leather with stretch suede

Article: **1140.3**

001 Black

Size: 6 - 12 (UK) Last: 39K Nature JK



LEAF VELCRO

Leather with stretch suede

Article: **1240.3**

001 Black

Size: 6 - 12 (UK) Last: 39K Nature JK



DUKE LACE

Leather / stretch leather

Article: **1101.3**

001 Black

Size: 6 - 12 (UK) Last: Nova H



301 Brown

DUKE VELCRO

Leather / stretch leather

Article: **1201.3**

001 Black

Size: 6 - 12 (UK) Last: Nova H



301 Brown



ORTHOPAEDIC

“At Nimco Made4You, Orthopaedic shoe construction combines the most recent medical knowledge and techniques with high quality craftsmanship and with style.”

Olav Toornend

Orthopaedic Division Manager as a professional and professional Orthopaedic Shoe Technician as vocation

For years orthopaedic shoes have been stigmatized as being big, bulky and anesthetic. At Nimco Made 4 You we believe that doesn't have to be that way, we work with a team of shoe modelers and designers that are here to guarantee that the perfect fitting of your shoe matches your taste and preferences.

The basic guidelines for Nimco Made4you orthopaedic shoes are the following:

- With the use of patented Stretch leathers for perfect anatomical adaptation of the shoe and maximum comfort.
- All natural material and high quality material starting with all linings.
- Minimum seems to avoid friction or pressure points
- Custom made inner supplements
- A wide range of materials and options to choose from – making the shoe totally personalized
- Although having a great freedom of choice can help you create it also makes it more difficult to choose.

In fact, did you ever find it difficult to choose a nice model for your orthopaedic shoes?

Well, now it's easier: in the Nimco Made4You catalogue you'll find a full collection to choose from or to use as a base of inspiration. Then you can personalize it to meet your own preferences: change the colors, change the materials, put in or take out accessories, create your style.

Choose, modify, express yourself, take your shoe to the next level! We'll do the rest!



At Nimco Made4You, we make shoes especially for you!

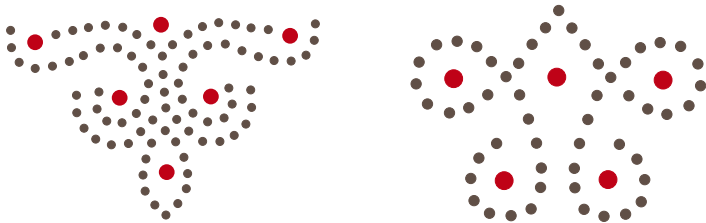
Accessorize your shoe!

Make your creation match your style and the brands you love. In this section you'll find some examples of the decorative options you can use.

Upper decorations

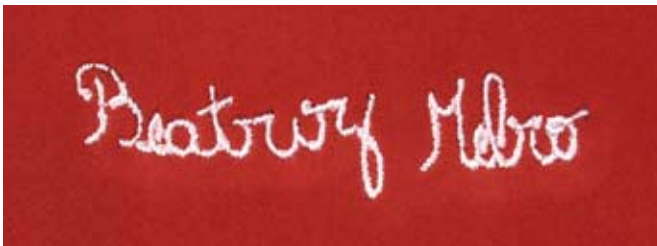
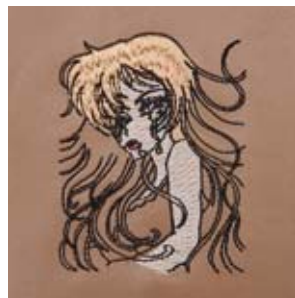
In order to meet your imagination we now present you with a set of materials and options – embroideries, decorations and perforations.

Perforations



Embroideries and symbols:

At Nimco Made4You we offer you a wide range of symbols that can be embroidered/tagged to your shoes. You can use an existing one, like the following or you can send us your own.



But the best way to finalize your creation is to give it your own brand and signature.



WWW.NIMCOMADE4YOU.COM

Customer Service +31 (0)24 684 80 90

Nimco Made4You, B.V.

PO Box 1361 | 6501 BJ Nijmegen | The Netherlands

Landgoed "De Wijchert" | Oude Kleefsebaan, 119

6572 AK Berg en Dal | The Netherlands

Tel.: +31 (0)24 684 80 90 | Fax.: +31 (0)24 684 35 85

info@nimcomade4you.com

Nimco Portugal, Lda.

Rua Oliveira Figueiredo, n.º 386 | ZI Travessas

3700 - 202 São João da Madeira | Portugal

Tel.: +351 256 810 470 | Fax.: +351 256 810 479

geral@nimcomade4you.com



Cert.
0 01 08457



Cert.
1 02 08061



Cert.
2 03 08047

